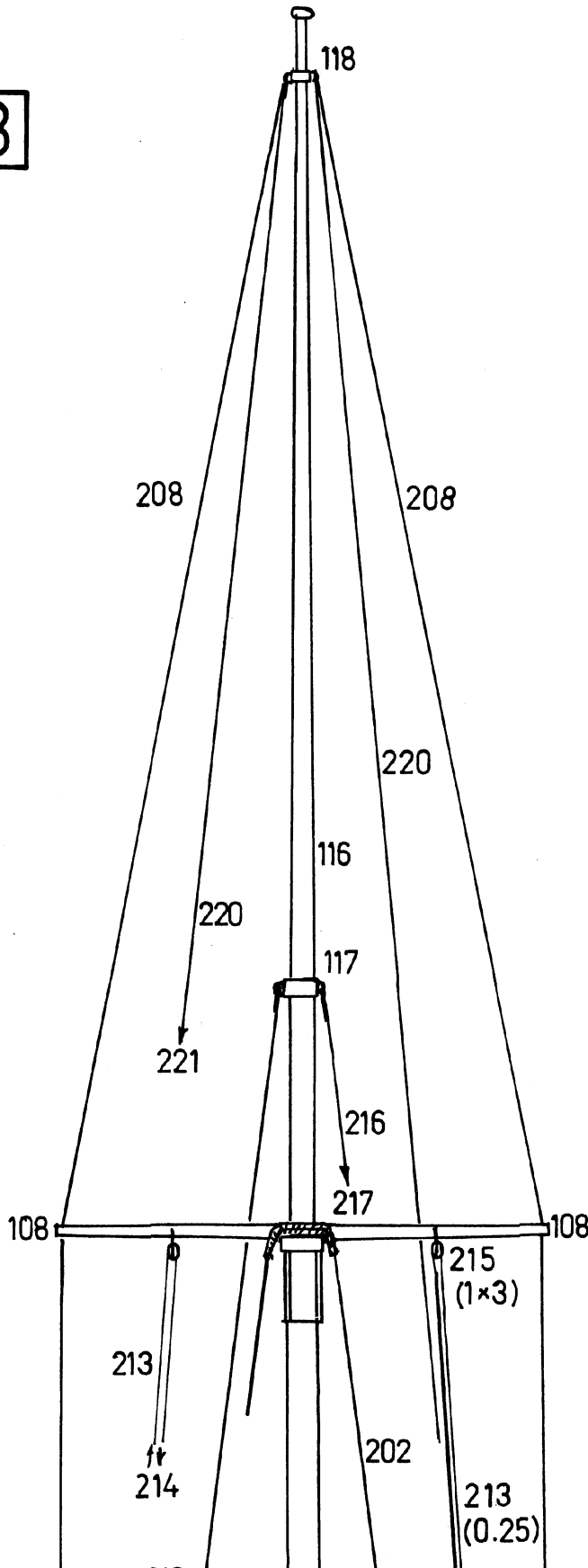
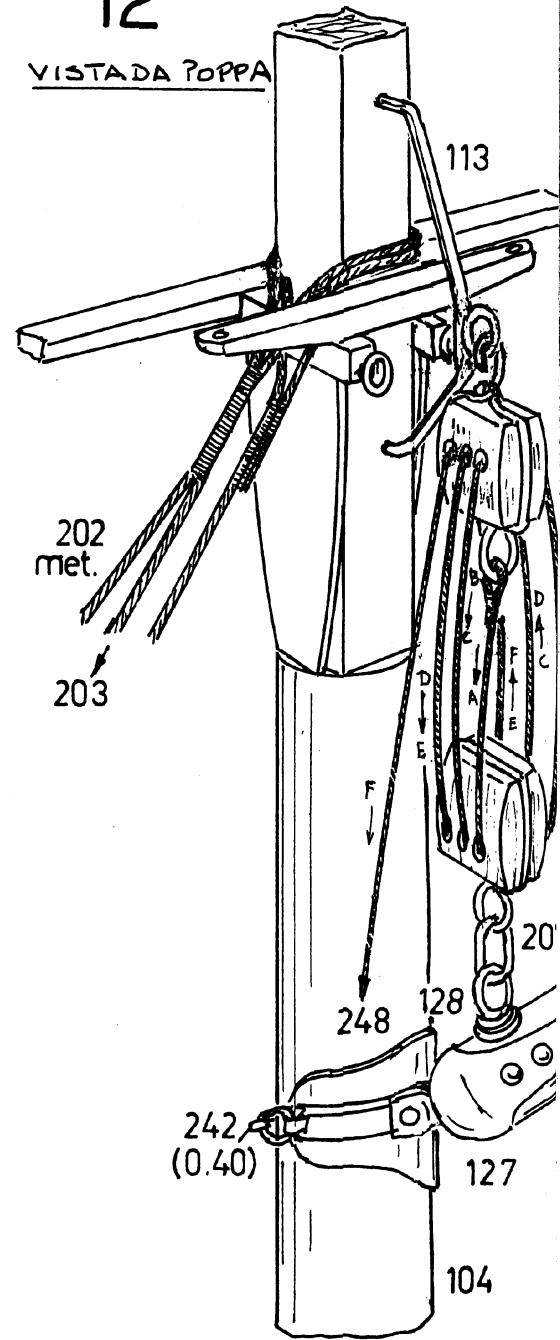


**B**



12

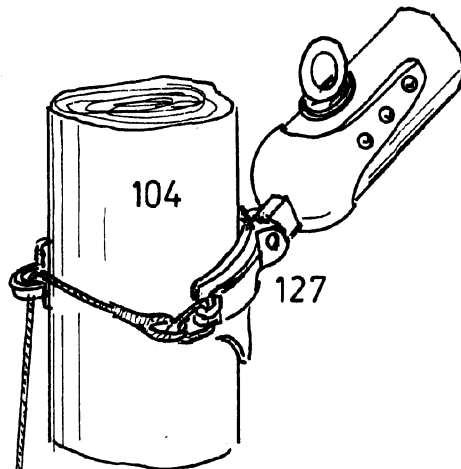
VISTADA POPPA



# 11

VISTA D'APRUA

Le manovre e i relativi accessori  
 essere tese, ma senza forzare  
 di colla vinilica molto diluita su  
 202 sono montate a coppie alte  
 è descritto il percorso dal punto  
 distintivo della manovra signifi  
 L'esempio;  
 238 = 75R+239R+240+241+242  
 destra sulla coperta, passa nel  
 scorrevole 241, di nuovo nel bo  
 percorso completo è illustrato  
 e le manovre 206/208/216/222



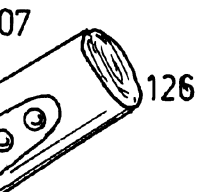
245 (3x5)

242(0.40)

243

244 (0.40)

246 (3x5)

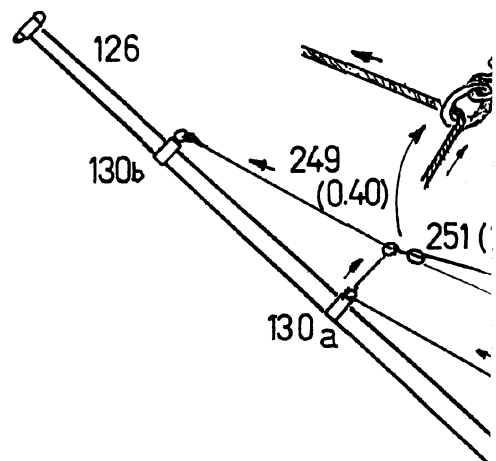


3

233

233

1



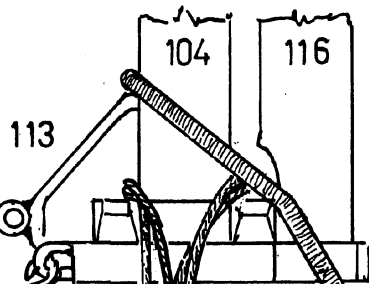
126

130b

249  
(0.40)

251

130a



113

104

116

233  
(1x5)

232(0.5)

121

234

206

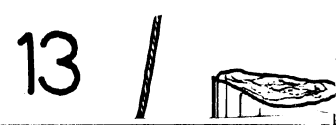
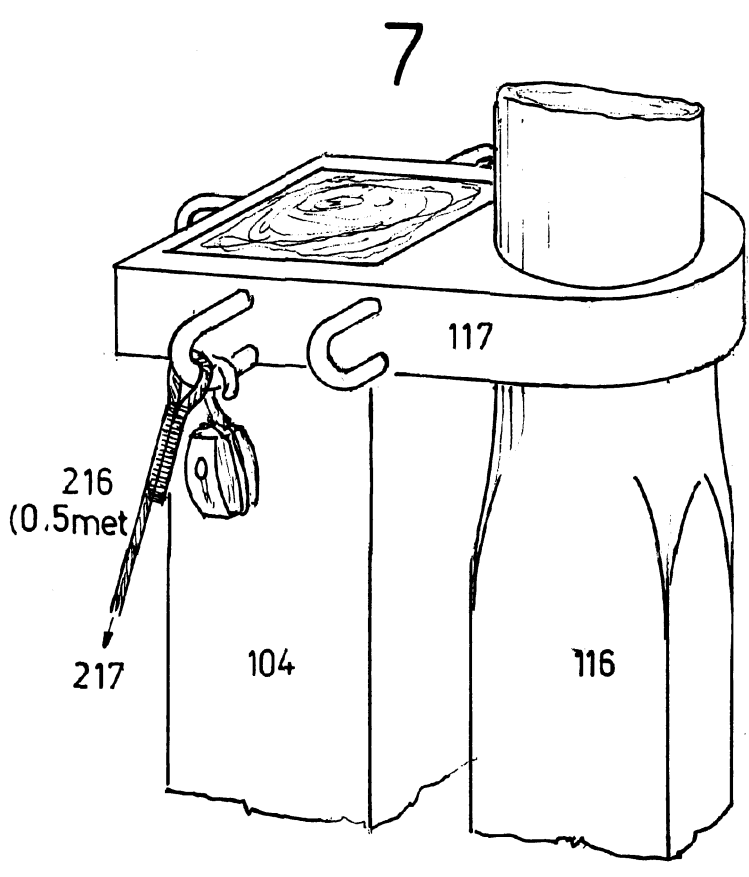
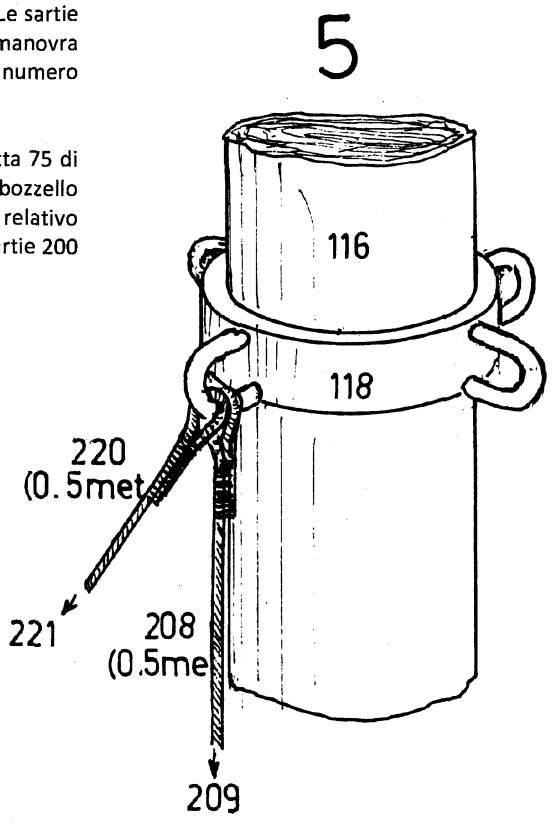
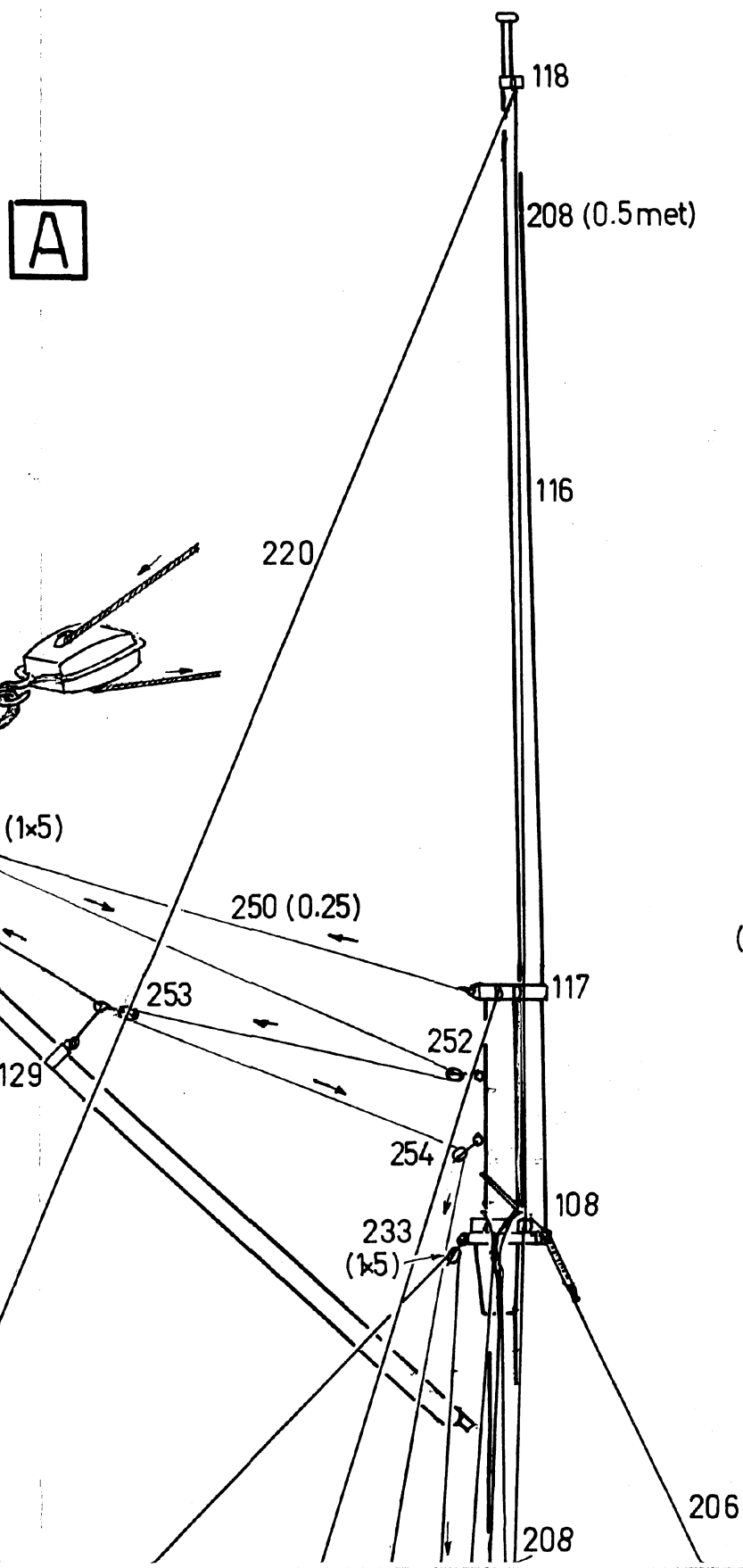
202 (0.5met)

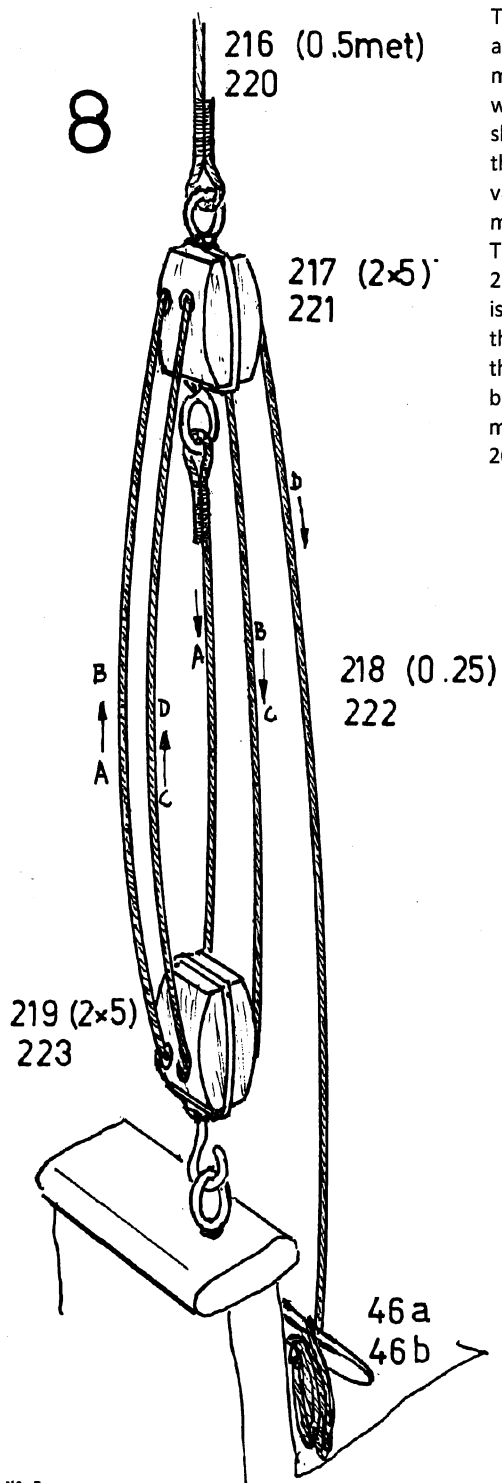
206 (0.5met)

PARTE RIVESTITA CON CORDA 0.25

essori sono numerati a partire dal 200 e vanno montati rispettando l'ordine numerico, devono essere montati sugli alberi. Non tentare di far funzionare le manovre correnti: è preferibile mettere un punto di partenza e terminali del percorso che fissino i cavi nella posizione voluta. Le sartie sono alternate a destra e a sinistra dell'albero e terminano legate alle bigotte; per ogni singola manovra un punto di partenza, attraverso i passaggi fino al punto di arrivo; la lettera "D" accanto al numero significa che questa è doppia, una a destra e una a sinistra dell'albero.

240+241+240+239L+75L = Fig. 40 significa che la manovra 238 è singola, parte dalla bitta 75 di sinistra, passa nel bozzello 239 sempre di destra, passa nel bozzello 240 legato al bompresso, passa nel bozzello 240, 241, 240, scende nel bozzello 239 e termina legata alla bitta 75 di sinistra, il relativo schema è nella figura 10. Le lettere "R" e "L" stanno per "Destra" e "Sinistra". Attenzione: le sartie 200, 220/224 e 226 sono ricavate da trecciola metallica come descritto nella tavola 4.





The rigging and the relative accessories are numbered starting from 200 and are set according to the numerical order, they must be strained, but must not force on the masts. Do not try to operate the running rigging: it is advisable to use a drop of thin white glue in the start and end point fixing the ropes in the desired position. The shrouds 202 are set two by two, at the right and at the left of the masts and end tied to the dead-eyes. Each rope is described beginning from the start point, through the various passages, as far as the end point; the letter "D" near the number of the rope means that this is double, one at the right and one at the left of the mast:

The example:

238 = 75R+239R+240+241+240+241+240+239L+75L = Fig. 40 means that the rope 238 is single, it starts from the right bitt 75 on deck, it goes through the right block 239, through the block 240 tied to the bowsprit, through the sliding block 241, again through the block 240, 241, 240, it goes down through the block 239 and ends tied to the left bitt 75; the complete relative course is illustrated in the fig. 10. The letters "R" and "L" mean "Right" and "Left". Attention: The shrouds 200 and the ropes 206/208/216/220/224 and 226 are made out of metal plait as described in the table 4.

Les manoeuvres et les accessoires relatifs sont numérotés à partir de 200 et doivent être montés en respectant l'ordre numérique; les manoeuvres doivent être tendues, mais ne doivent pas forcer sur les mâts. Il ne faut pas essayer de faire fonctionner les manoeuvres courantes: il est préférable de mettre un point de colle blanche très diluée dans les points de départ et fin du parcours, en fixant ainsi les câbles dans la position désirée. Les haubans 202 sont montés par couples, alternativement à droite et à gauche du mât et se terminent liés aux caps-de-mouton. Pour chaque manoeuvre on a décrit le parcours du point de départ, à travers les passages jusqu'au point d'arrivée la lettre "O" à côté du numéro de la manoeuvre signifie qu'elle est double, une à droite et une à gauche du mât.

L'exemple:

238 = 75R+239R+240+241+240+241+240+239L+75L = Fig. 40 signifie que la manoeuvre 238 est simple, elle part de la bitte 75 de droite sur le pont, elle passe à travers la poulie 239 de droite, dans la poulie 240 liée au beaupré, dans la poulie glissante 241, de nouveau dans la poulie 240, 241, 240, elle descend dans la poulie 239 et finit liée à la bitte 75 de gauche, le parcours relatif complet est illustré dans la fig. 10. Les lettres "R" et "S" signifient "Droite" et "Gauche". Attention: Les haubans 200 et les manoeuvres 206/208/216/220/224 et 226 sont tirés de fil métallique comme décrit dans la table 4.

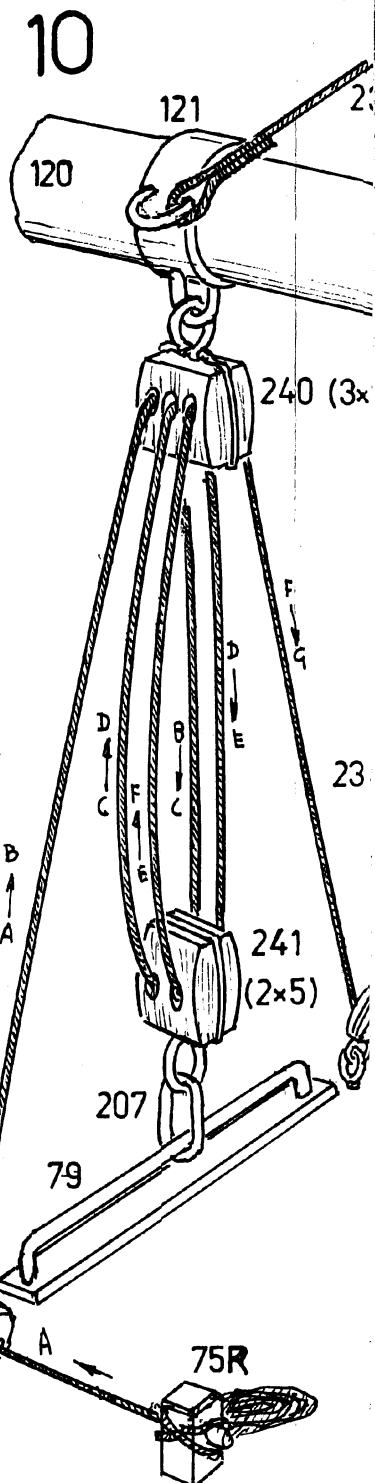
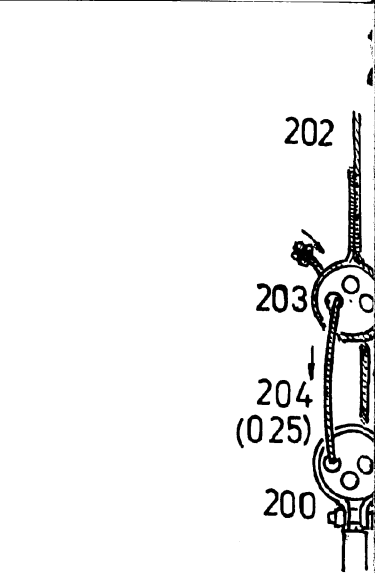
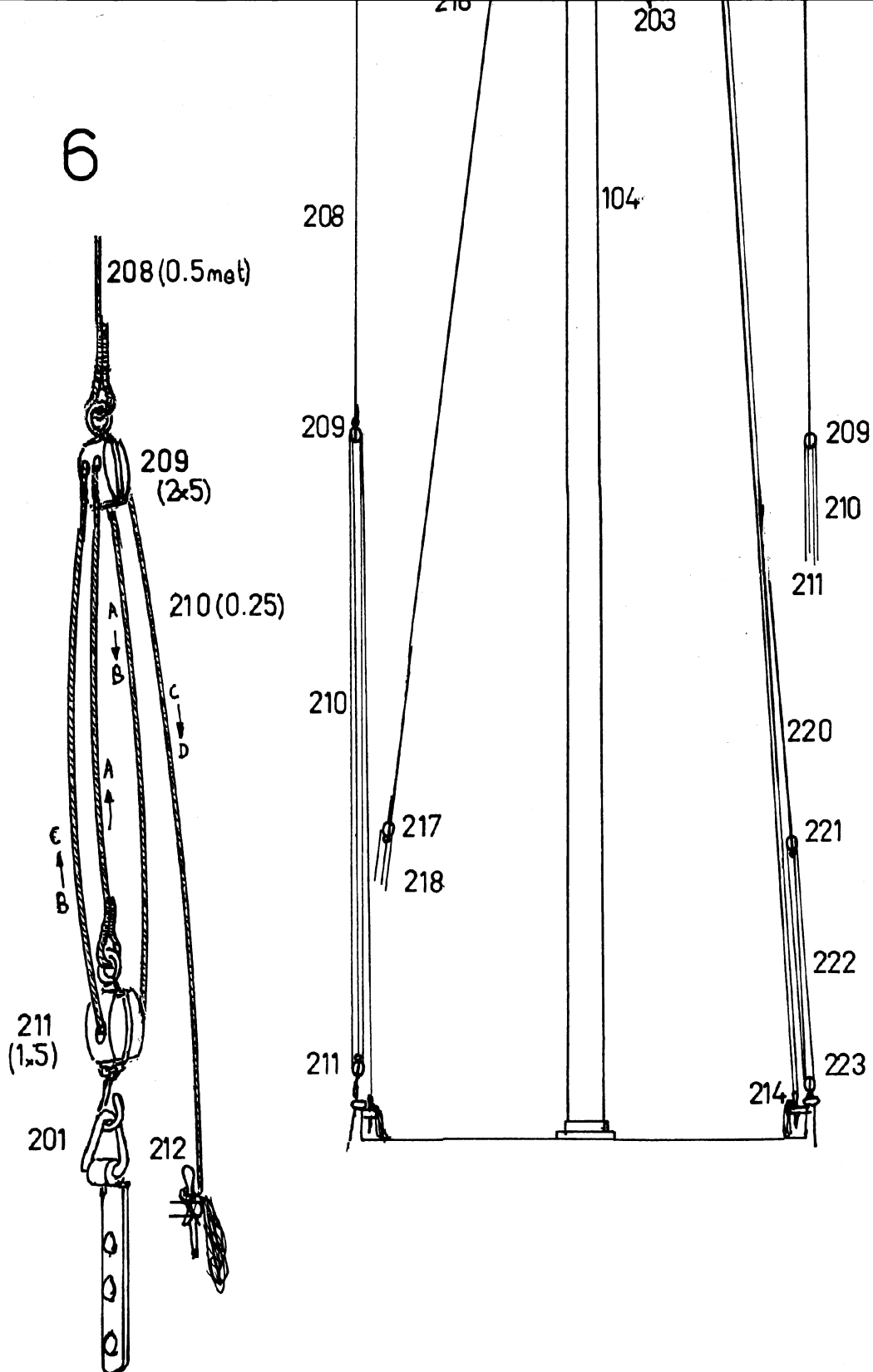
LISTINA MATERIALE TAVOLA N° 5

Denominazione	Q.	Mat	Dim.	Cod.	N°	Denominazione	Q.	MAT	Dim.	Cod.
00 BIGOTTA	6	NO	5	7003	229	MANOVRA BOMA	1	CO	0.25	6201
01 ANELLO	2	OTN	5	0317	230	BOZZELLO	1	NO	2X5	7024
02 SARTIA	6	MET	0.80	5039	231	BOZZELLO	1	NO	2X5	7024
03 BIGOTTA	6	NO	5	7003	232	DRIZZA	2	CO	0.40	6203
04 TIRANTE	6	CO	0.25	6201	233	BOZZELLO	2	NO	1X5	7017
05 ASTA	2	OTN	Ø 1	----	234	BOZZELLO	2	NO	1X4	7016
06 STRAGLIO	1	MET	0.80	5039	235	PARANCO	2	CO	0.25	6201
07 ANELLO	1	OTN	5	0318	236	BOZZELLO	2	NO	1X4	7016
08 SARTIA GAMBIA	2	MET	0.80	5039	237	CAVIGLIA	2	MET	7	0174
09 BOZZELLO	2	NO	2X5	7024	238	BRACCIO	1	CO	0.40	6203
10 PARANCO	2	CO	0.25	6201	239	BOZZELLO	2	NO	1X4	7016
11 BOZZELLO	2	NO	1X5	7017	240	BOZZELLO	1	NO	3X5	7032
12 CAVIGLIA	2	MET	7	0174	241	BOZZELLO	1	NO	2X5	7024
13 TIRANTE	2	CO	0.25	6201	242	LEGATURA	1	CO	0.40	6203
14 CAVIGLIA	2	MET	7	0174	243	CAVIGLIA	1	MET	7	0174
15 BOZZELLO	2	NO	1X3	7015	244	DRIZZA	1	CO	0.40	6203
16 1° PATERAZZO	2	MET	0.80	5039	245	BOZZELLO	1	NO	3X5	7032
17 BOZZELLO	2	NO	2X5	7024	246	BOZZELLO	1	NO	3X5	7032
18 PARANCO	2	CO	0.25	6201	247	BOZZELLO	1	NO	1X5	7017
19 BOZZELLO	2	NO	2X5	7024	248	CAVIGLIA	1	MET	7	0174
20 2° PATERAZZO	2	MET	0.80	5039	249	COLLEGAMENTO	1	CO	0.40	6203
21 BOZZELLO	2	NO	2X5	7024	250	AMANTIGLIO	1	CO	0.25	6201
22 PARANCO	2	CO	0.25	6201	251	BOZZELLO	1	NO	1X5	7017
23 BOZZELLO	2	NO	2X5	7024	252	BOZZELLO	1	NO	1X5	7017
24 SARTIA	2	MET	0.80	5039	253	BOZZELLO	1	NO	1X5	7017
25 ARRIDATOIO	2	MET	15	8314	254	BOZZELLO	1	NO	1X5	7017
26 MARTINGALA	1	MET	0.80	5039	255	BOZZELLO	1	NO	1X4	7016
27 ARRIDATOIO	1	MET	15	8314	256	CAVIGLIA	1	MET	7	0174
28 SARTIA	2	CO	0.40	6203						

PERCORSO MANOVRE TAVOLA N° 5

202D=104+203=F.1	226 =103+227=F.9+A
204D=203+200+203+200+203+200+202=F.2	228D=103+39=F.9+4
206 =104+207=F.3+4	229 =230+231+230+231+230+124C=F.A
208D=118+108+209=F.5	232D=121+233+234=F.1+A
210D=211+209+211+209+212=F.6	235D=234+236+234+237=F.A+C
213D=214+215+214=F.B	238 =75R+239R+240+241+240+241+239L+75L
216D=117+217=F.7	242 =127+127+243=F.11+C
218D=217+219+217+219+217+46A=F.B	244 =245+246+245+246+245+246+245+247+248=F.12+13
220D=118+221=F.8	249 =129+130A+130B=F.A
222D=221+223+221+223+221+46B=F.8	250 =117+251+252+253+254+255+256=F.A+1
224D=103+39+225=F.9+14	

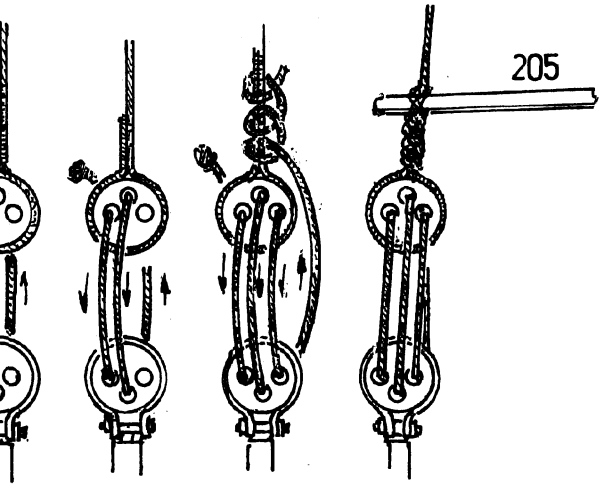
4 / 206 (0.5 met)



Die Taue und die zugehorigen Zubehorteile sind alle numeriert und die Zahlen beginnen mit 200. Die Stucke werden nach der Zahlordnung eingesetzt, sie mussen ohne Zwange auf den Masten gespannt sein. Das laufende Gut nicht funktionieren lassen; es ist besser auf den Start- und Endpunkten etwas Leim zu legen, das die Kabel in der richtigen, gewunschten Stelle befestigt. Die Wanten 202 muss man zu zweit, rechts und links des Mastes einsetzen und sie enden auf den Jungfern, mit denen sie verbunden sind. Vom Anfang bis Ende, wird auch ganz gut der Lauf jeder Steuerung beschrieben; die Buchstabe "D", bei der Nummer vom Tau bedeutet, dass sie doppelt ist, ein rechts und ein links des Mastes.

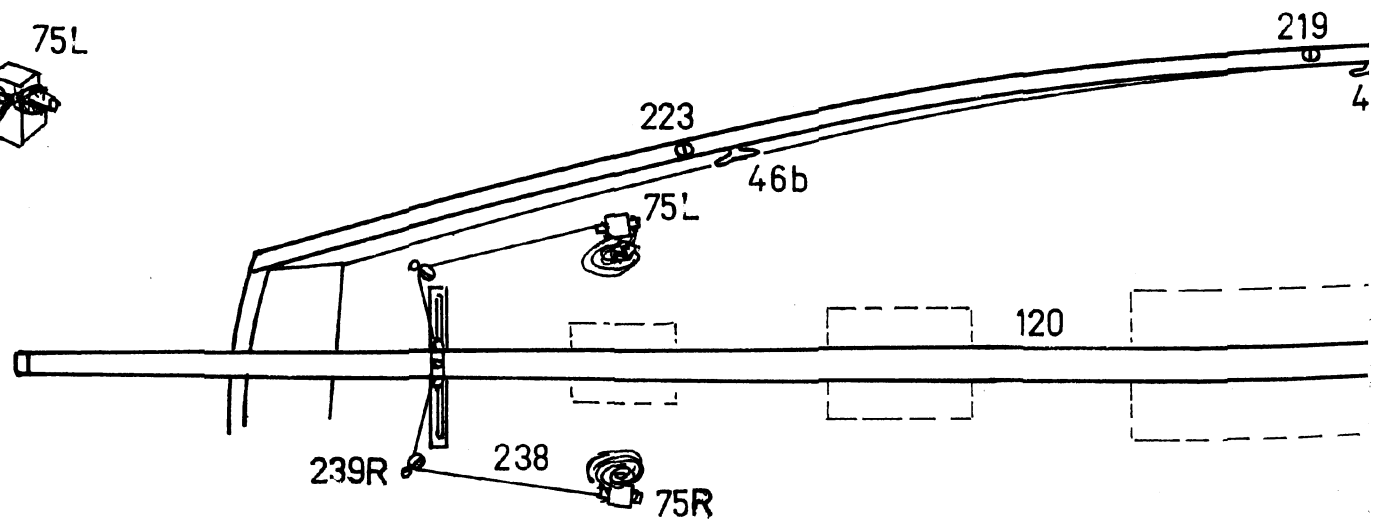
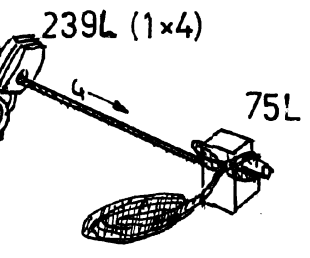
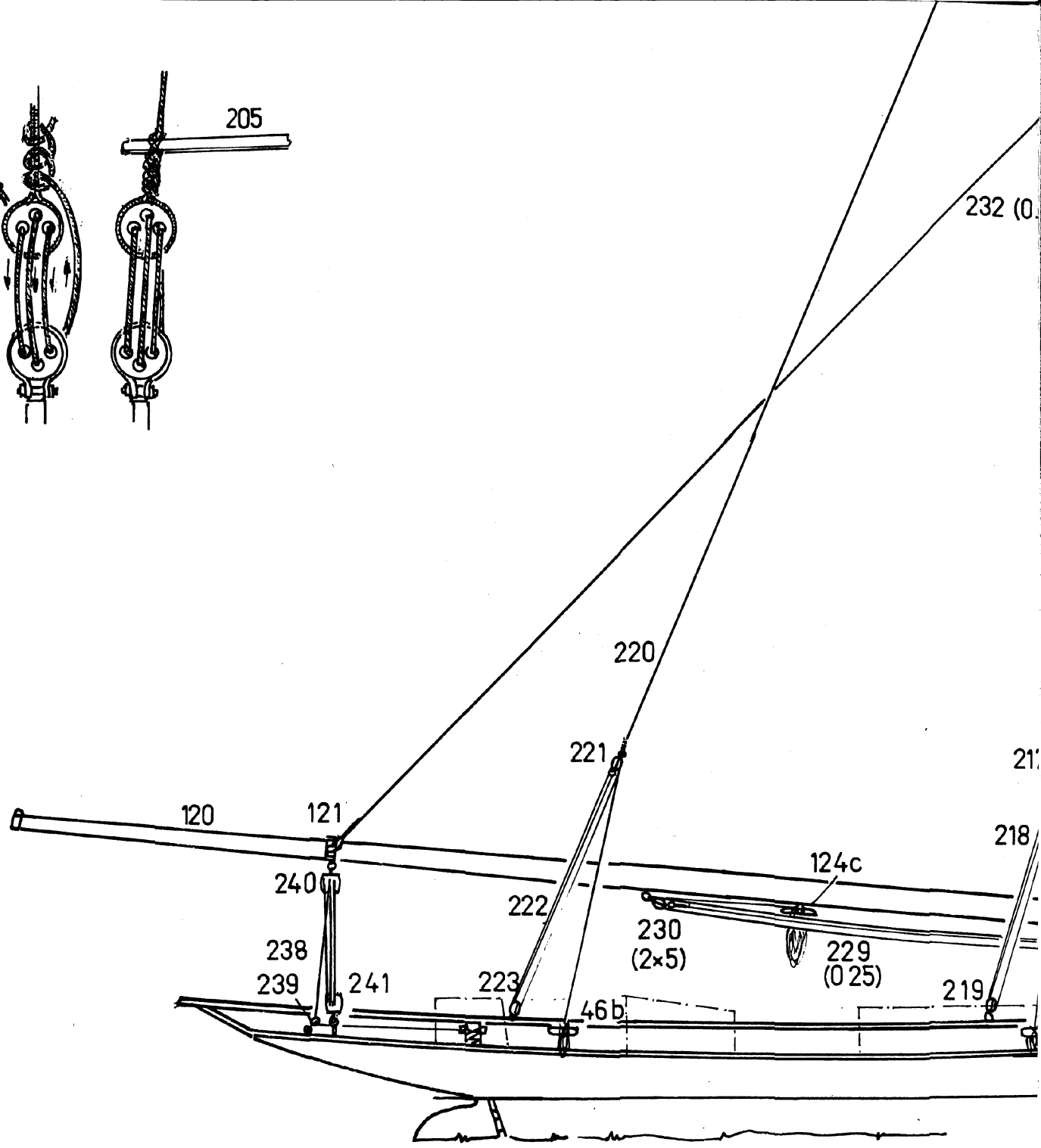
Das folgende Beispiel:

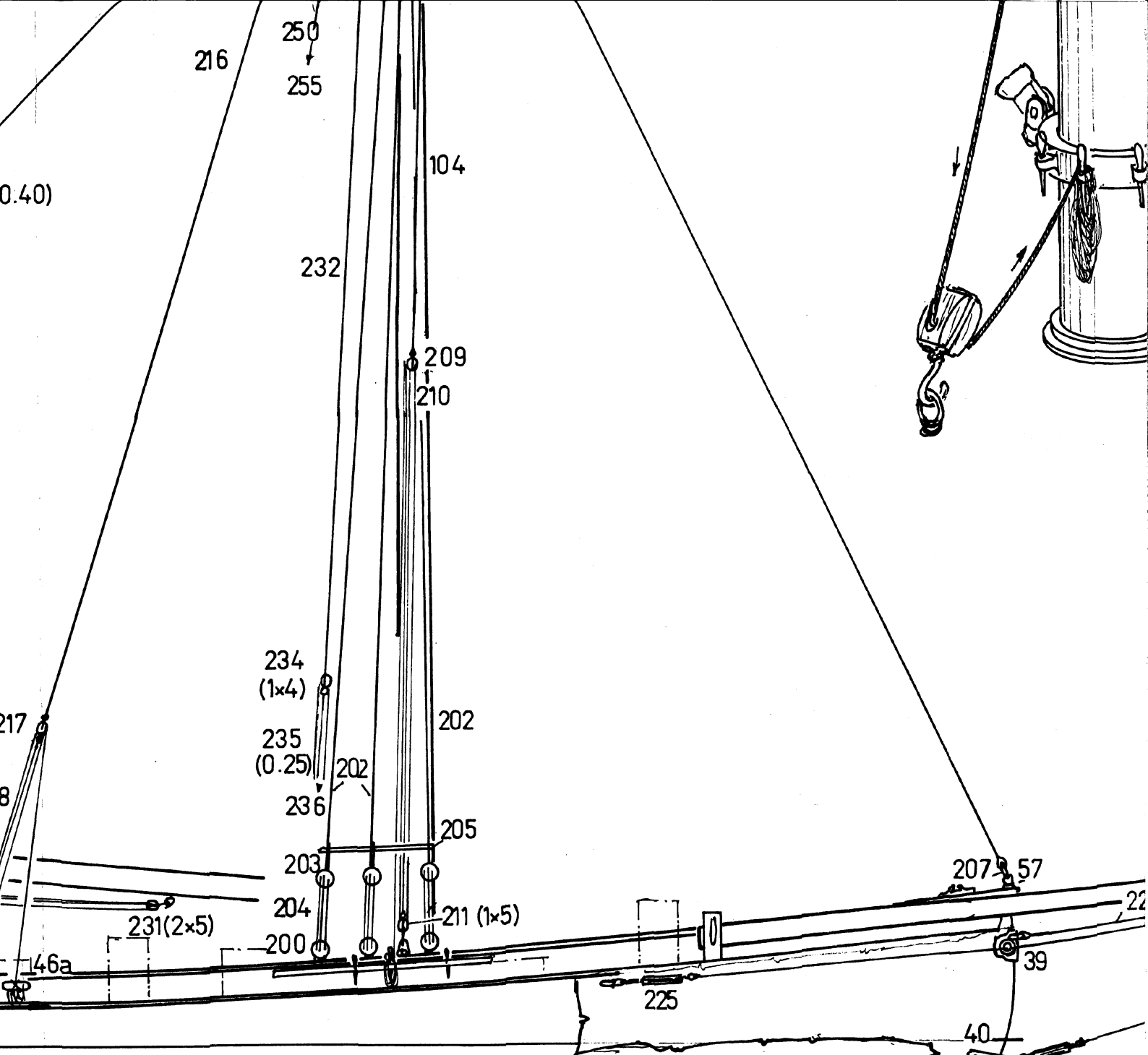
238 = 75R+239R+240+241+240+241+240+239L+75L = Abb. 40 bedeutet, das Tau 238 einzeln ist, es beginnt mit dem Poller 75 rechts auf dem Deck, es lauft durch den Block 239, dann durch den Block 240 (mit dem Bugspriet verbunden), dann noch durch den Block 241, wieder durch die 240, 241, 240, es geht in den Block 239 hinein und endet auf dem Poller 75 links. Der ganze Lauf wird auf dem Bild 10 beschrieben. Die Buchstaben "R" und "L", bedeuten rechts und links. Merke: die Wanten 200 und die Taue 206/208/216/220/221/226 bestehen aus Metallgeflecht wie auf der Tafel 4.



x5)

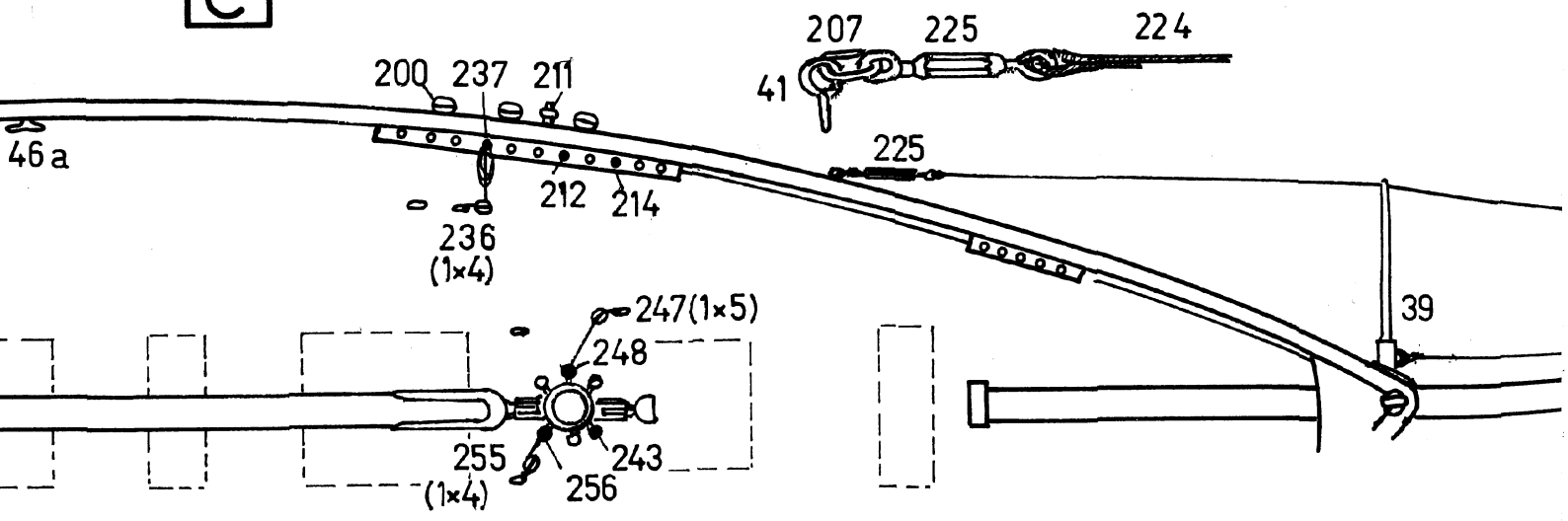
38 (0.4)

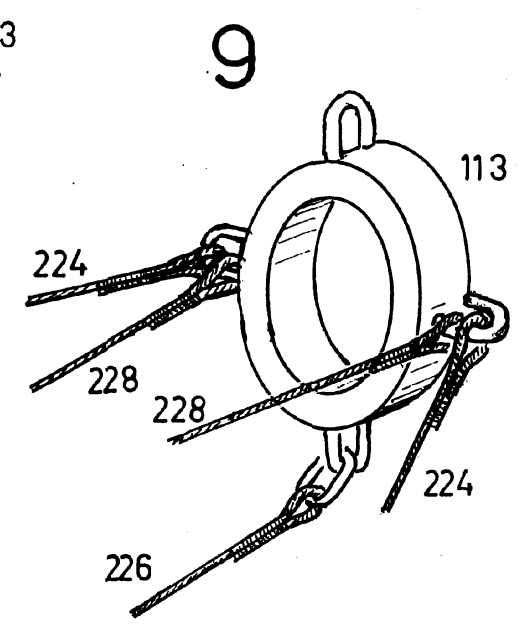
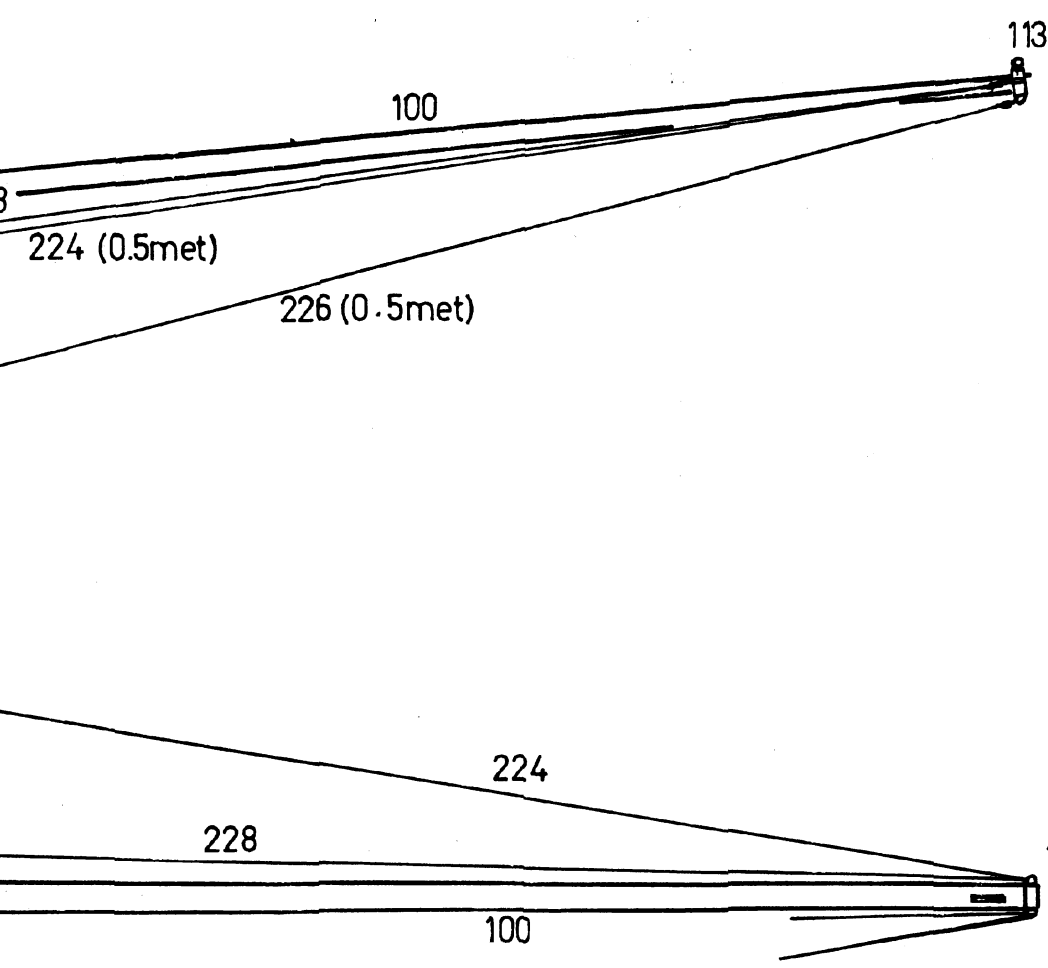
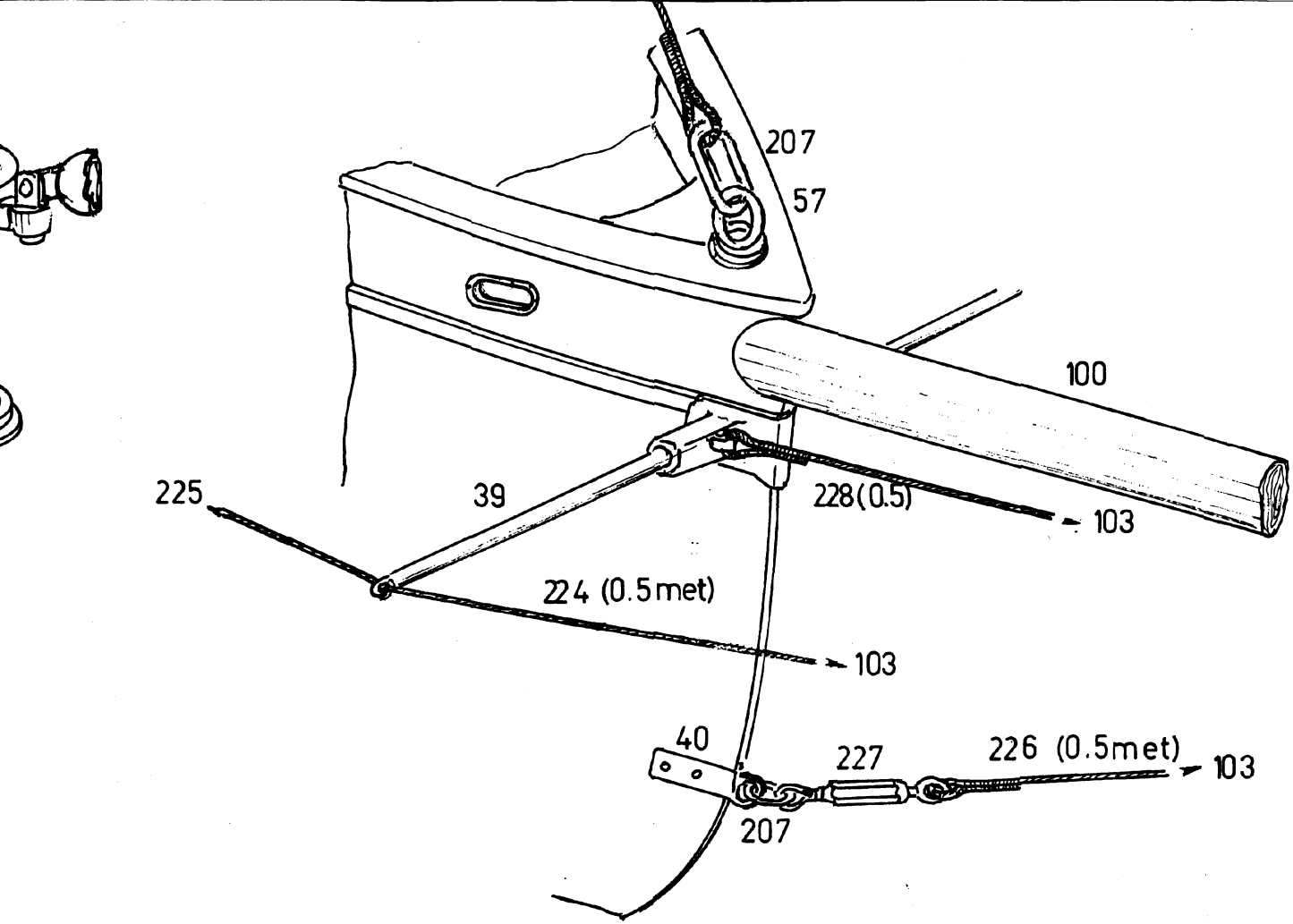




C

14





MV43 Puritan - plan 5

Designer: Luigi Volonte